



**Trinity
College
Dublin**

The University of Dublin

Structured Study Visit, 19-21 September

Assoc Prof Martin C Henman

School of Pharmacy and Pharmaceutical Sciences



Co-funded by the
Erasmus+ Programme
of the European Union

Panoz Institute &
School of Pharmacy



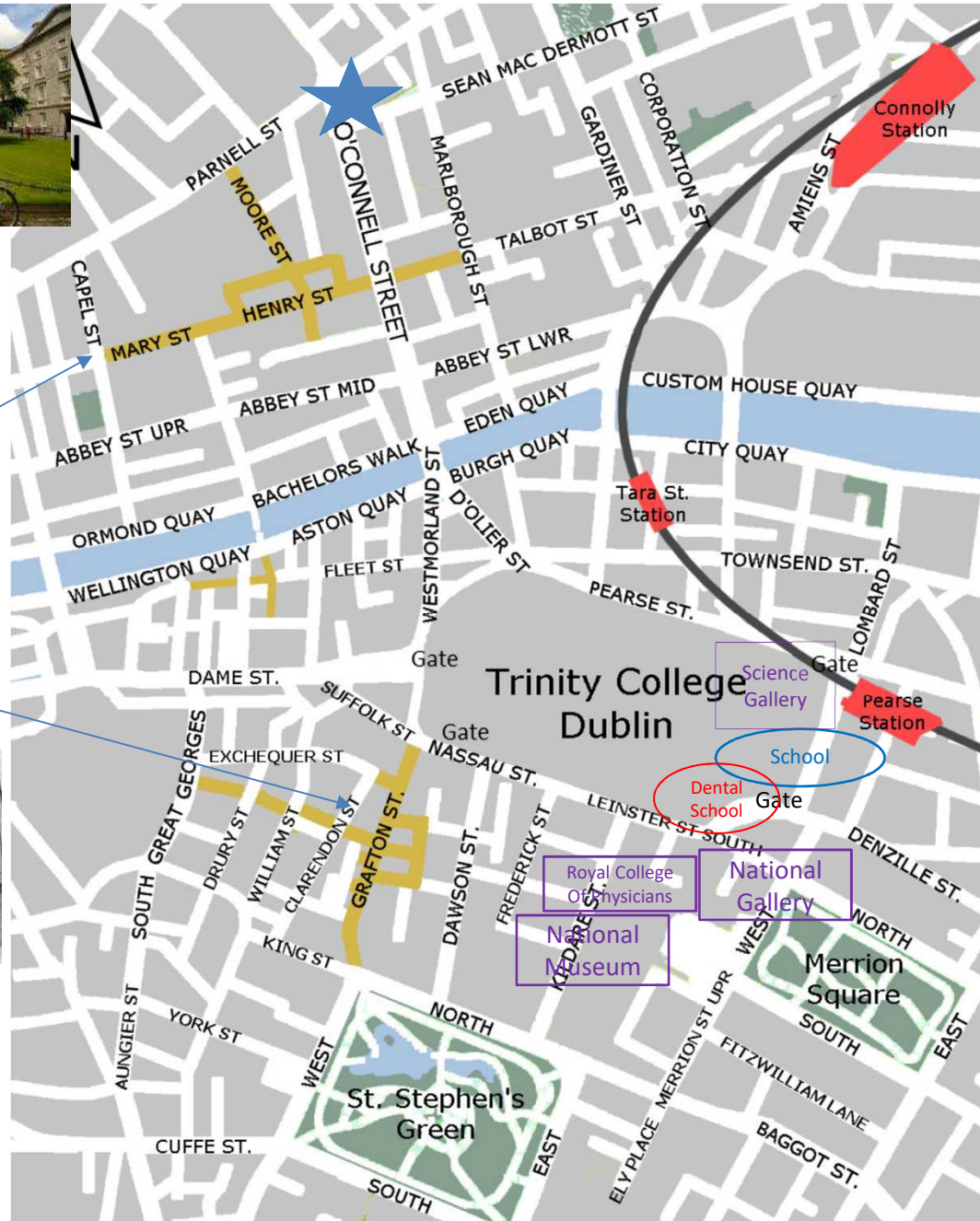
Pearse St

Dining Hall

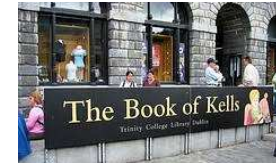
To O'Connell St

Nassau St

Grafton St



Pedestrian Shopping areas

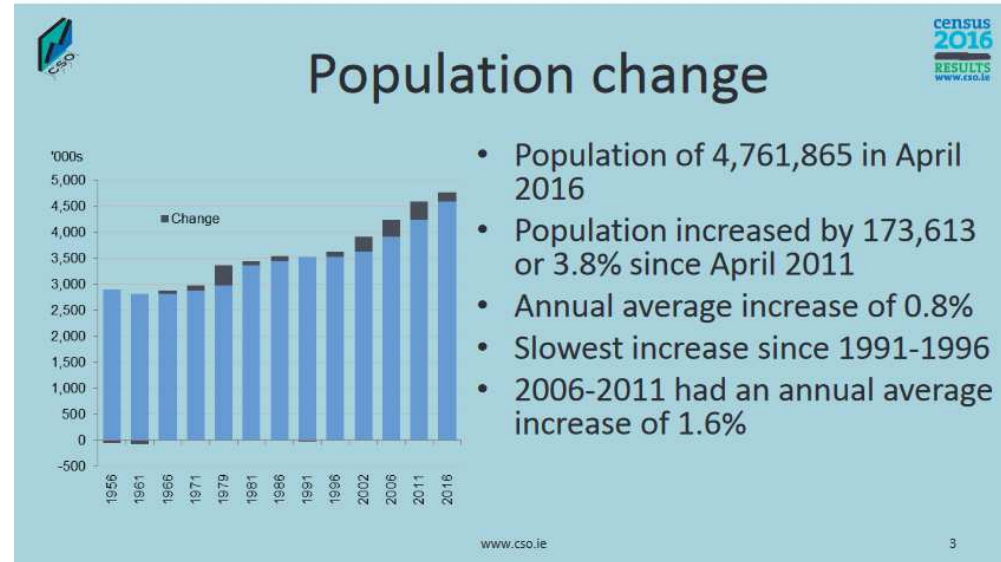


Ireland & its nearest neighbour(s)



 Co-funded by the
Erasmus+ Programme
of the European Union

Ireland



Economy

Ireland is a small highly globalised economy, with a large exporting sector, and a significant number of multinational corporations. The Irish economy entered its 5th year of economic expansion in 2016 with growth in consumer spending, tax revenue, building and construction and expansion in both manufacturing and services sectors.

Real GDP Growth

COUNTRY	2016 (F)	2017 (F)	2018 (F)
IRELAND	4.9	3.2	3.1
SWEDEN	3.6	2.6	2.2
LUXEMBOURG	3.5	3.1	3.3
AUSTRALIA	2.9	2.7	2.9
NEW ZEALAND	2.8	2.7	2.6
SPAIN	2.6	2.3	2.0
UNITED KINGDOM	1.8	1.1	1.7
GERMANY	1.7	1.4	1.4
SINGAPORE	1.7	2.2	2.6
NETHERLANDS	1.7	1.6	1.8
UNITED STATES	1.6	2.2	2.1
BELGIUM	1.4	1.4	1.4
HONG KONG SAR	1.4	1.9	2.8
AUSTRIA	1.4	1.2	1.2
FRANCE	1.3	1.3	1.6
DENMARK	1.0	1.4	1.7
PORTUGAL	1.0	1.1	1.2
SWITZERLAND	1.0	1.3	1.5
FINLAND	0.9	1.1	1.3
NORWAY	0.8	1.2	1.8
ITALY	0.8	0.9	1.1
GREECE	0.1	2.8	3.1

Source: IMF Economic Outlook 2016

Priority Areas

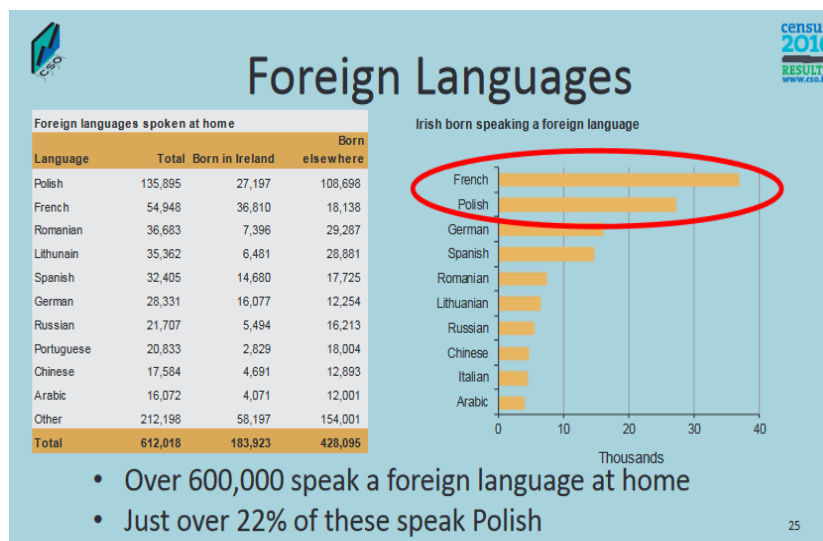
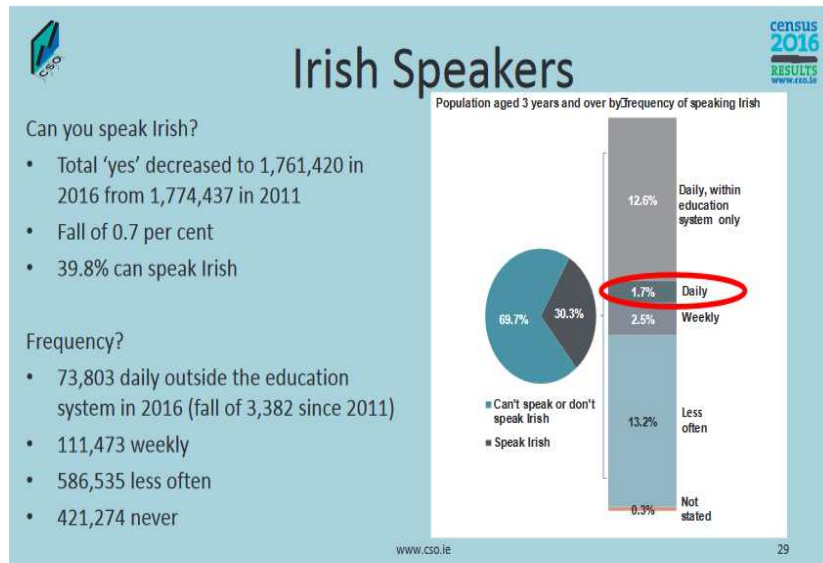
Technology	Future Network & Communications Data Analytics Management, Security & Privacy Digital platforms, Content & Applications
Health & Medical Technologies	Connected Health and Independent Living Medical Devices Diagnostics Therapeutics, synthesis, formulation, processing & drug delivery
Sustainable Food	Food for Health Sustainable Food Production & Processing
Energy	Marine Renewable Energy Smart Cities & Smart Grids
Manufacturing & Materials	Manufacturing Competitiveness Processing Technologies & Novel Materials
Innovation in Services & Business Processes	Innovation in Services & Business Processes

Source: Department of Jobs, Enterprise & Innovation – National Research Prioritisation Report.

Ireland ranked 7th out of 128 countries in the 2016 Global Innovation Index.

Ireland is ninth in terms of research impact (citations per paper) on the Thomson-Reuters InCites global scientific rankings. (Irish Research Council, 2016)

Language



Trivia



Shrine of Saint Valentine at Whitefriar Street Church in Dublin

SAINT VALENTINE IS INTERRED IN DUBLIN

Completely true. Whitefriar Street Church in Dublin is the unlikely resting place of the relics of Saint Valentine that were presented by Pope Gregory XVI to an Irish Carmelite named John Spratt in the year 1835. In 1836 the remains were received by Archbishop Murray of Dublin and have been displayed in Whitefriar Street Church ever since. Engaged couples even attend the special mass held there on February 14th to bless their impending union.

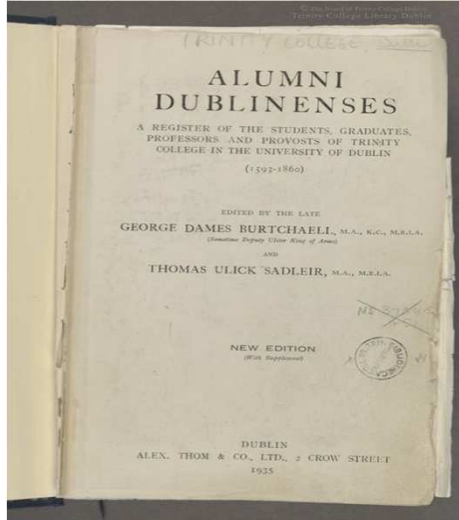
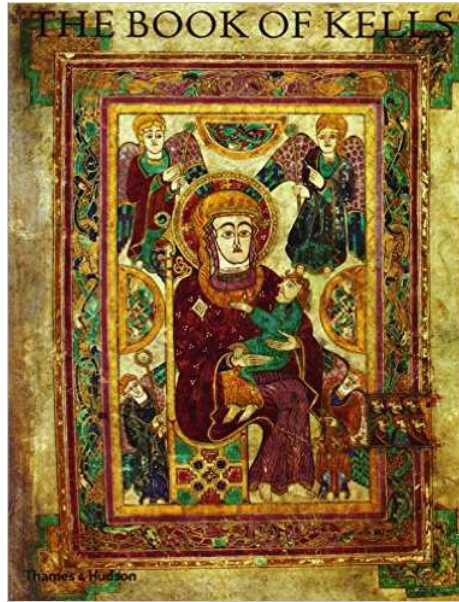


Who says the European Union does not have a sense of humor!

Famous? People in Dublin



Trinity College Dublin



Trinity is the oldest Irish University. Created by royal charter of Queen Elizabeth I in 1592 the former Priory of All Hallows - *'the college of the most holy and undivided trinity, of Queen Elizabeth near Dublin'*



It is the only college of the University of Dublin.

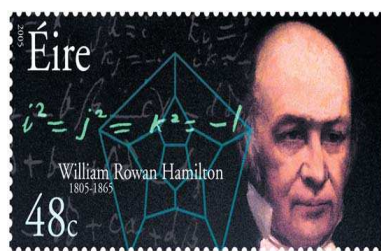
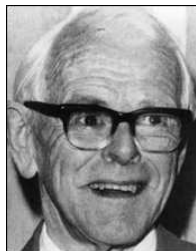
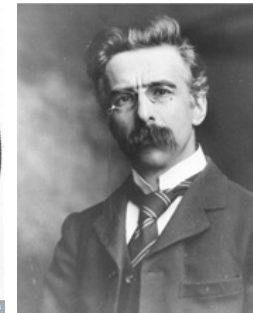
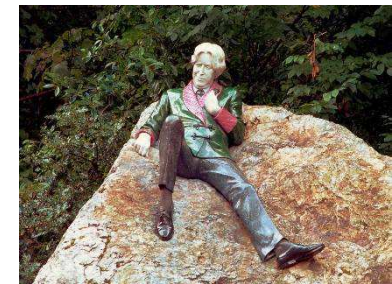
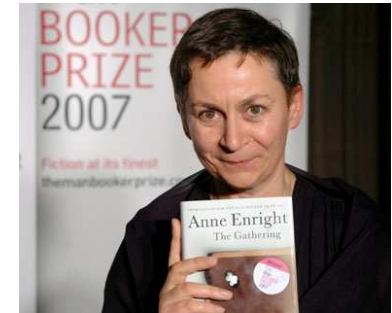
Just over 13,000 undergraduate and 4,000 postgraduate students in the arts & humanities, & in business, law, engineering, science, & health sciences.

Trinity College Dublin

Trinity's graduates include the writers Oscar Wilde and Samuel Beckett (Nobel laureate), the scientists William Rowan Hamilton and Ernest Walton (Nobel laureate - Physics) and William Campbell (Nobel laureate – Physiology 2015), the political thinker Edmund Burke, and the former President of Ireland and United Nations High Commissioner Mary Robinson.

Also,

*Robert Graves and Francis Rynd,
John Joly and Denis Burkitt.*



School of Pharmacy and Pharmaceutical Sciences



RESEARCH

- Discipline, Multi-disciplinary, Multi-Institutional

Postgraduate Courses

- MSc in Community Pharmacy
- MSc in Hospital Pharmacy
- MSc in Pharmaceutical Sciences

Currently 70 students

Research Degrees

- MSc or PhD in any of the five Pharmacy Subjects – *currently 32 students*







Health

An Roinn Sláinte
DEPARTMENT OF HEALTH

HOME ABOUT US OUR MINISTERS CONTACT US AS GAEILGE Search **GO**

Healthy Ireland Publications and Statistics Consultations News Centre

 Our Mission is to improve the health and wellbeing of people in Ireland: by keeping people healthy; providing the healthcare people need; delivering high quality services and getting best value from health system resources.

 **Healthy Ireland**  **CNO's Office**  **NPSO - Patient Safety**

News Centre

18 SEP 2017

Minister Harris welcomes decisions of INMO & IMO memberships

Minister for Health Simon Harris TD has welcomed the decision of the INMO membership to vote in favour of the Public Service Stability Agreement following the

Featured Publication

29 AUG 2017

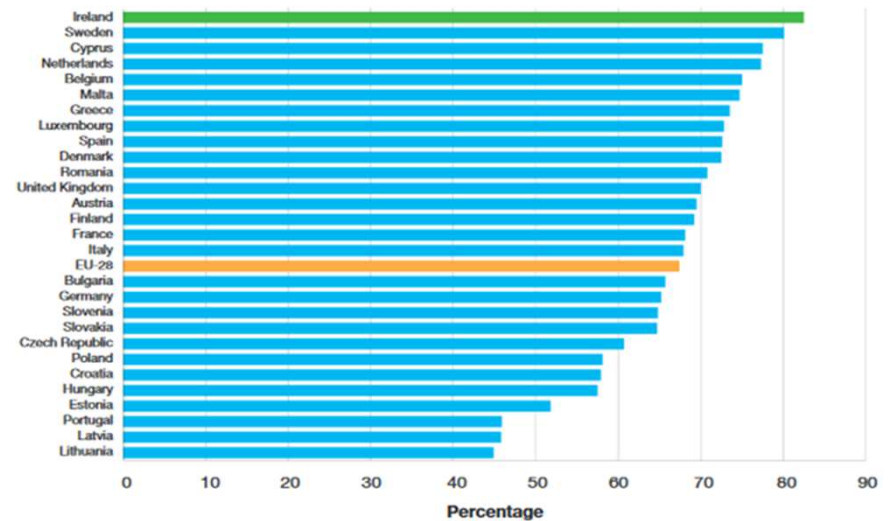
The General Scheme of the Children's Health Bill 2017

The Government agreed in 2006 to the creation of a single national tertiary paediatric hospital, into which the services of the three existing children's hospitals would

Our Policy A - Z

[READ MORE](#)

FIGURE 2.2
PERCENTAGE OF THE POPULATION REPORTING GOOD OR VERY GOOD HEALTH IN EU-28 COUNTRIES, 2014



Source: EU-SILC, Eurostat.

Health

FIGURE 2.10
ALCOHOL AND CIGARETTE CONSUMPTION PER ANNUM, PER CAPITA AGED 15 YEARS AND OVER, 1995 TO 2015

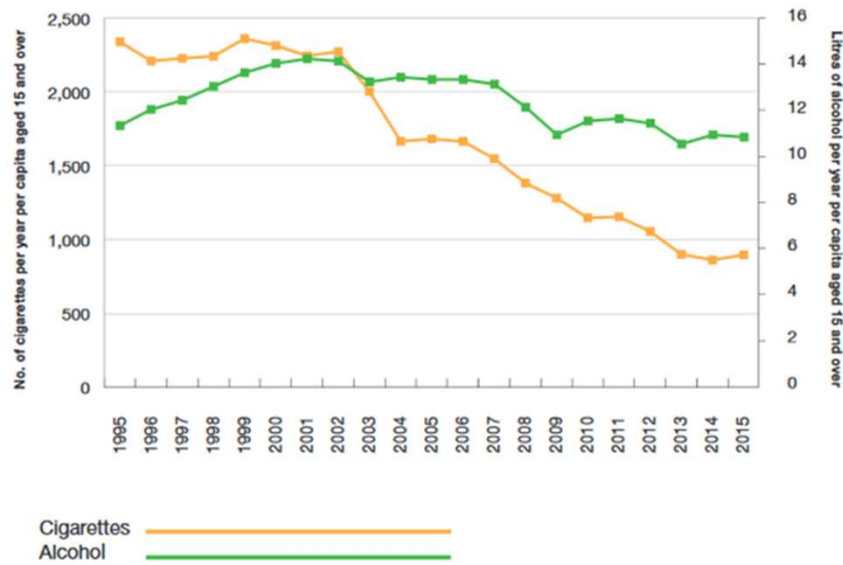
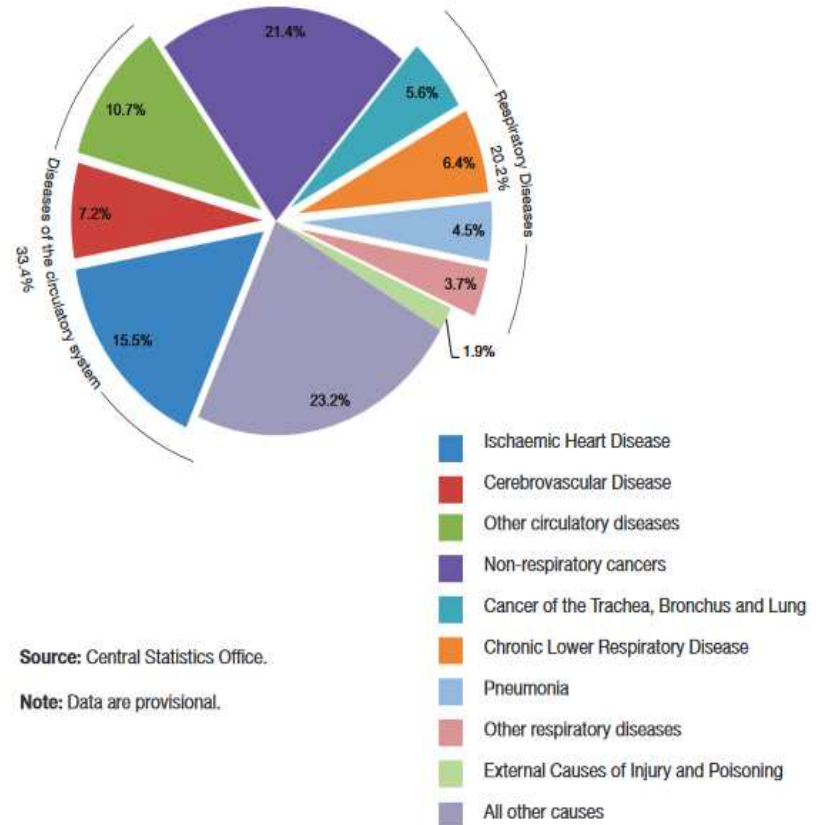


FIGURE 2.3b
DEATHS BY PRINCIPAL CAUSES, PERCENTAGE DISTRIBUTION, 2015, AGES 65 AND OVER

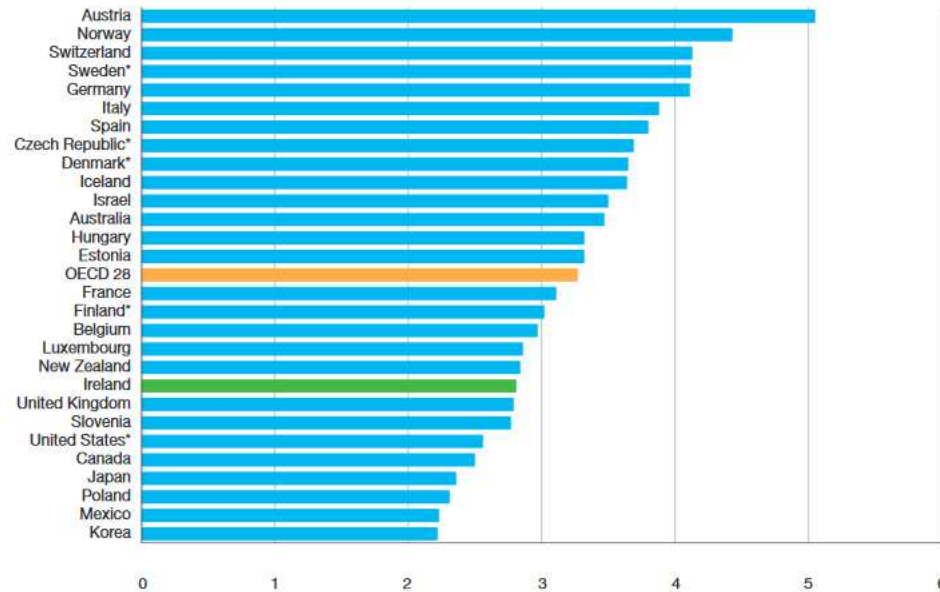


Source: Central Statistics Office.

Note: Data are provisional.

Medications and Money

FIGURE 5.4
PRACTISING DOCTORS PER 1,000 POPULATION, 2014



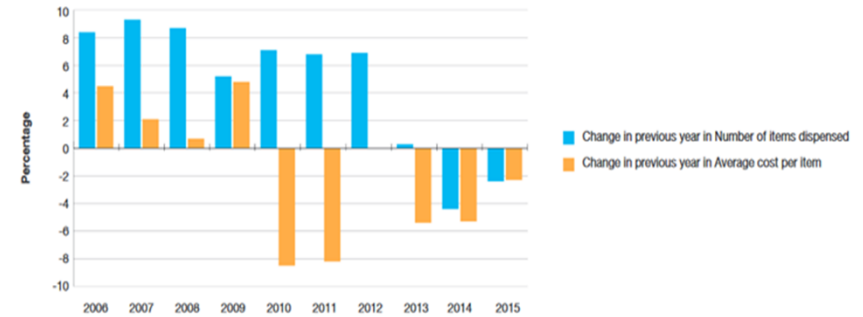
Source: OECD.

TABLE 6.1
PUBLIC HEALTH EXPENDITURE IN MILLIONS OF EURO, 2007 TO 2016

	2007	2008	2009	2010	2011	2012	2013	2014	2015 ^A	2016 ^A	% Change	
											2007-2016	2015-2016
Total Public Non-Capital Expenditure on Health	13,100	13,935	14,431	13,818	13,181	13,218	13,084	13,276	13,889	14,562	11.2	4.8
<i>Public Non-Capital Expenditure on Health (excluding treatment benefits)</i>	13,000	13,828	14,321	13,762	13,156	13,197	13,063	13,246	13,856	14,529	11.8	4.9
Total Public Capital Expenditure on Health	585	598	447	366	347	350	347	386	398	414	-29.2	4.0
Total Public Expenditure	13,685	14,533	14,878	14,184	13,528	13,568	13,431	13,662	14,287	14,976	9.4	4.8

Sources: Non-capital expenditure - Revised Estimates for Public Services and HSE Performance Assurance Reports.
Capital expenditure - revised estimates for Public Services and HSE Reports on Capital Programme.

FIGURE 4.3
PRESCRIPTION ITEMS DISPENSED UNDER THE GENERAL MEDICAL SERVICES (GMS) SCHEME: % CHANGE FROM PREVIOUS YEAR IN NUMBER OF ITEMS DISPENSED AND AVERAGE COST PER ITEM PAID TO PHARMACIES, 2006 TO 2015



Source: General Medical Services (Payments) Board / Primary Care Reimbursement Service, HSE.

Notes:
(i) Data on cost per item includes dispensing fee, ingredient cost and VAT.
(ii) Number of prescription items excludes Stock Order Items.

Irish Health Services; Delivery

- Health Service Executive
 - Day-to-day delivery
 - Public services
 - Hospitals – employees
 - Primary Care - contractors
- Specialists practice almost exclusively in Hospitals
- Primary Care
 - Gate-keeping role – access to hospital
 - Primary Care Teams
- Substantial private market in Primary Care
 - Most people (~70%) pay to see General Practitioner
- National Clinical Programmes
 - Clinical Guidelines
- Health Information & Quality Authority



Health Services: Regulation of Professions

Varies between 'Anglo' and Non-Anglo countries

- All have some central role & link to Government policy

Protect the public – UK & Ireland

- Re-modelled in response to appalling cases of patient harm & consumerism
- 'Lay – person' majority

Practice

- Re-certification
- CPD - portfolios

Medical Council
Dental Council
Pharmaceutical Society of Ireland
Nursing and Midwifery Board

Education

- Accreditation



Health Services: Regulation of Professions

Keep a Register of professionals

- Including assessing those who come from other countries

Accredit undergraduate education of professional

- Statutory Body – act on behalf of Department of Health

Continuing Practice

- Code of Practice
- Re-certification
- CPD

Medical Council
Dental Council
Pharmaceutical Society of Ireland
Nursing and Midwifery Board

Complaints/Disciplinary matters

Standards of Practice



School of Nursing & Midwifery

Home

▸ **Midwifery**

▸ **Courses**

▸ **Research**

▸ **Staff List**

▸ **Events &
Conferences**

▸ **Links**

▸ **Contact Us**

▸ **Art Deco Gallery**

▸ **Staff (Local)**

▸ **Student (Local)**

Last updated: Aug 13 2009.

Email:

nursing.midwifery@tcd.ie

Welcome to the School of Nursing and Midwifery, Trinity College Dublin



The School of Nursing and Midwifery aims to provide leadership in multi-professional healthcare research, education and practice at local, national and international levels. We strongly support the principle of equal access, and encourage all students and staff to achieve their full potential within an open, liberal and facilitative environment. The ethos of the School is one that sees the patient/client as the primary focus. We seek to make a major contribution to evidence based, high quality health care on the island of Ireland and abroad, and will achieve this through excellence in the provision of teaching for pre- and post-registration nurses and midwives and in the conduct of world-class research.

The School of Nursing and Midwifery was established in September 1996 to enable the development of undergraduate and post-graduate nursing education programmes in the Faculty of Health Sciences, and is located in 24, D'Olier St.. There are two professions represented in the School, nursing and midwifery, and the nursing section is composed of four disciplines: general, psychiatric, intellectual disability and children's nursing. Teaching takes place on the Trinity College campus, in the D'Olier St premises, and in School premises in the Faculty of Health Sciences' buildings at St. James' and Tallaght Hospitals.

The School has developed a national and international record of research funding, conduct and dissemination second to none in the nursing and midwifery field in the Republic of Ireland. In addition, it has become established as the largest School of Nursing and Midwifery in the country, with the highest numbers of undergraduate and research students.

Nursing

Children's and General Nursing (Integrated): 4.5 years leading to BSc plus RCN & RGN

General Nursing: 4 years leading to BSc plus RGN

Intellectual Disability Nursing: 4 years leading to BSc plus RNID

Midwifery: 4 years leading to BSc plus RM

Psychiatric Nursing: 4 years leading to BSc plus RPN

Nursing Competencies

On completion of the programme, the student will be required to have achieved competence in the following five domains of practice:

Professional/ethical practice

Holistic approaches to care and the integration of knowledge

Interpersonal relationships

Organisation and management of care

Personal and professional development.



Bord Altranais agus
Cnámhseachais na hÉireann
Nursing and Midwifery Board
of Ireland

Text size  

- [Home](#)
- [Complaints](#)
- [Standards & Guidance](#)
- [What We Do](#)
- [Education](#)
- [Registration](#)
- [Check the Register](#)



Protecting the public
by supporting nurses and midwives to maintain
practice standards

[Registered Nurse](#) >>

[Registered Midwife](#) >>

[Student](#) >>

[Applicant](#) >>

- Undergraduate

Admissions

+ Curriculum

Fees

Precautions Against
Infectious Diseases

+ Electives

On-line Student Request
Form

FAQ

Intercalated MSc in
Biomedical Science

+ Internships

+ Postgraduate

Medical Library

Student Activities

Undergraduate



Professor Shaun
McCann, Director of
Undergraduate
Teaching and
Learning

The School of Medicine in TCD has developed the undergraduate degree in Medicine in accordance with the Medical Council and the World Federation of Medical Education guidelines. The course is 5 years and is designed primarily for school leavers who are required to sit for the HPAT examination prior to entry as directed by the Higher Education Authority (HEA). There are a small number of places available to 'mature students' ([Mature Students Office](#))

The new approach to Medical Education endeavours to blur the distinction between pre-clinical and clinical teaching. However a large amount of teaching during the first two years takes place on the main campus of the University and the remainder takes place in hospital settings.

Students are introduced to clinical medicine in their first term through the Family Case Study. Teaching in the first year is a combination of Problem Based Learning (PBL), small group teaching, didactic lectures and practical demonstrations. Self directed learning and use of e-learning are encouraged throughout the course. Student selected modules including 'perception' and philosophy are available in the first year.

The School offers the following degree courses:

- [Medicine \(MB, BCh, BAO\)](#)
- [Physiotherapy \(BSc\)](#)
- [Occupational Therapy \(BSc\)](#)
- [Radiation Therapy \(BSc\)](#)
- [Human Nutrition & Dietetics \(BSc\)](#)
- [B.Sc. in Human Health and Disease \(BSc\)](#)



The Medical Council regulates the Medical Profession in Ireland.

About Us

Registration

Professional Competence

Education & Training

Professional Standards

Health Sub Committee

FOI

News

PSI

Education & Training

Information

Education and Training

The Medical Practitioners Act, 1978, states that it shall be the duty of the Council from time to time to satisfy itself:

- (a) as to the suitability of the medical education and training provided by any body in the State recognised by the Council for such purpose,
- (b) as to the standards of theoretical and practical knowledge required for primary qualifications,
- (c) as to the clinical training and experience required for the granting of a certificate of experience, and
- (d) as to the adequacy and suitability of postgraduate education and training provided by bodies recognised by the Council for the purposes of medical specialist training.

Information

- Check a Doctor's Registration
- Specialist registration
- Specialist registration council recommendations

Pre-Registration Examination System (PRES)

- Useful information on the PRES
- View PRES results
- PRES dates

Medical Schools and Undergraduate Education

- Medical schools in Ireland
- Council reports on the Medical Schools
- Medical schools and undergraduate education council recommendations



[PRES - Pre-Registration Examination System](#)



[Studying medicine in Ireland? Click here for a full list of schools](#)



[Click here for information on the intern year](#)

Medicine

Medicine is a five-year degree programme.

**At the end of which graduates complete a one year internship;
3 months General Medicine 3 months Surgery +....**

As a junior doctor they may then enter a specialised training scheme.

For example, within the Royal College of Physicians of Ireland are;

The Irish Committee on Higher Medical Training

Faculty of Occupational Medicine

Faculty of Pathology

Faculty of Paediatrics

Faculty of Public Health Medicine

Institute of Obstetricians and Gynaecologists

Royal College of Physicians of Ireland



"Through our policy work, the College will continue to inform and influence government policy on public health and to be a passionate advocate, without conflict of interest, for good health."

Professor Frank Murray, President, Royal College of Physicians of Ireland

Extract from Professor Murray's foreword in our 2015 - 2020 Strategic Plan

OUR PRESIDENT

Professor Frank Murray is the 141st President of the Royal College of Physicians of Ireland.

He is a Consultant Physician/Gastroenterologist at Beaumont Hospital, Dublin and Associate Professor of Medicine at the Royal College of Surgeons in Ireland.

As President, Professor Murray chairs our Executive and Council. He is actively involved in many other areas of our College, including the [RCPI Policy Group on Alcohol](#) and the EQUALS Initiative, which sends decommissioned medical equipment to developing countries.



Programme

Day 2 Wednesday, 20/09/17	9.30 – 12.00 Coffee 10.00	All participants	Taking Stock Session 1	Introduction to Trinity – AMH & MH Serbian delegates to present; 1. Competency based outcomes & their implementation 2. Experiential learning 3. Interprofessional Education 4. Teaching Competencies development - progress to date Prof I Boncz	Maxwell Theatre Hamilton Building
	Lunch			O'Reilly concourse	School
Day 2 Wednesday, 20/09/17	13.30-16.00 15.00 coffee	All participants	Regulation and Experiential placements – Session 2	13.30 Pharmacy Regulator - PSI 14.10 Context of Experiential - TR 14.30 Physiotherapy Experiential 15.30 Pharmacy Experiential (APPEL) – AR	Maxwell Theatre Hamilton Building
	Dinner			Participant's choice	



Programme

Day 3 Thursday, 21/09/17	9.00 - 11.00 10.30 - 10.50 Coffee	All participants	Health Professions in Ireland – Session 3	9.00 Introduction MH 9.30 Dental Education DS 10.00 CPD in Pharmacy (IloP) - CB 10.50 - 11.10 Summary MH 11.30 Royal College of Physicians of Ireland visit – Kildare Street	LTEE3 School of Pharmacy
	Lunch			Free time, participant's choice	
Day 3 Thursday, 21/09/17	14.00-16.15	All participants	Developing Capabilities Session 4	14.00 Centre for Academic Practice and Student Learning, TCD – CO'F Comments from the Serbian participants in Dundee course 15.00 Irish College of General Practitioners 16.00 Other aspects to be addressed in remaining period of the project	LTEE3 School of Pharmacy



